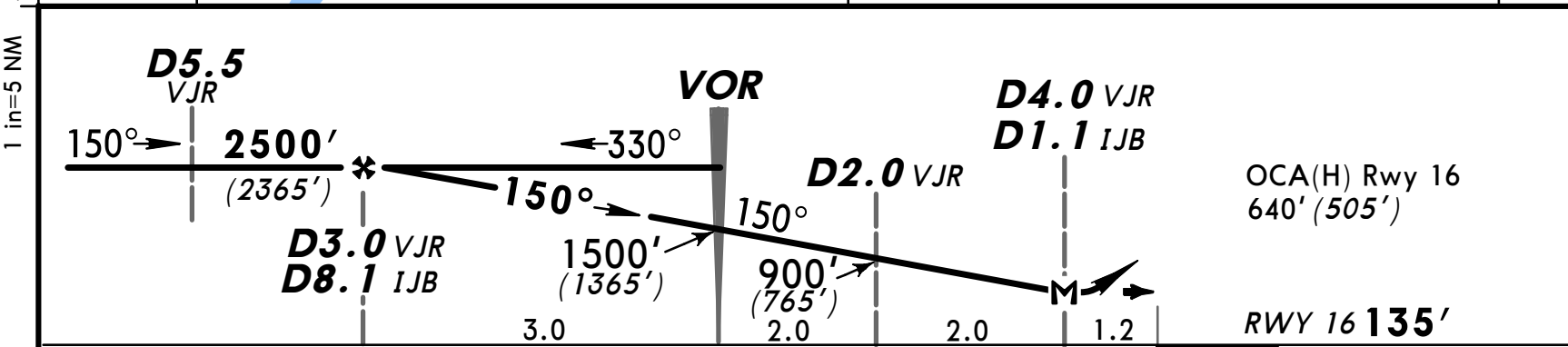
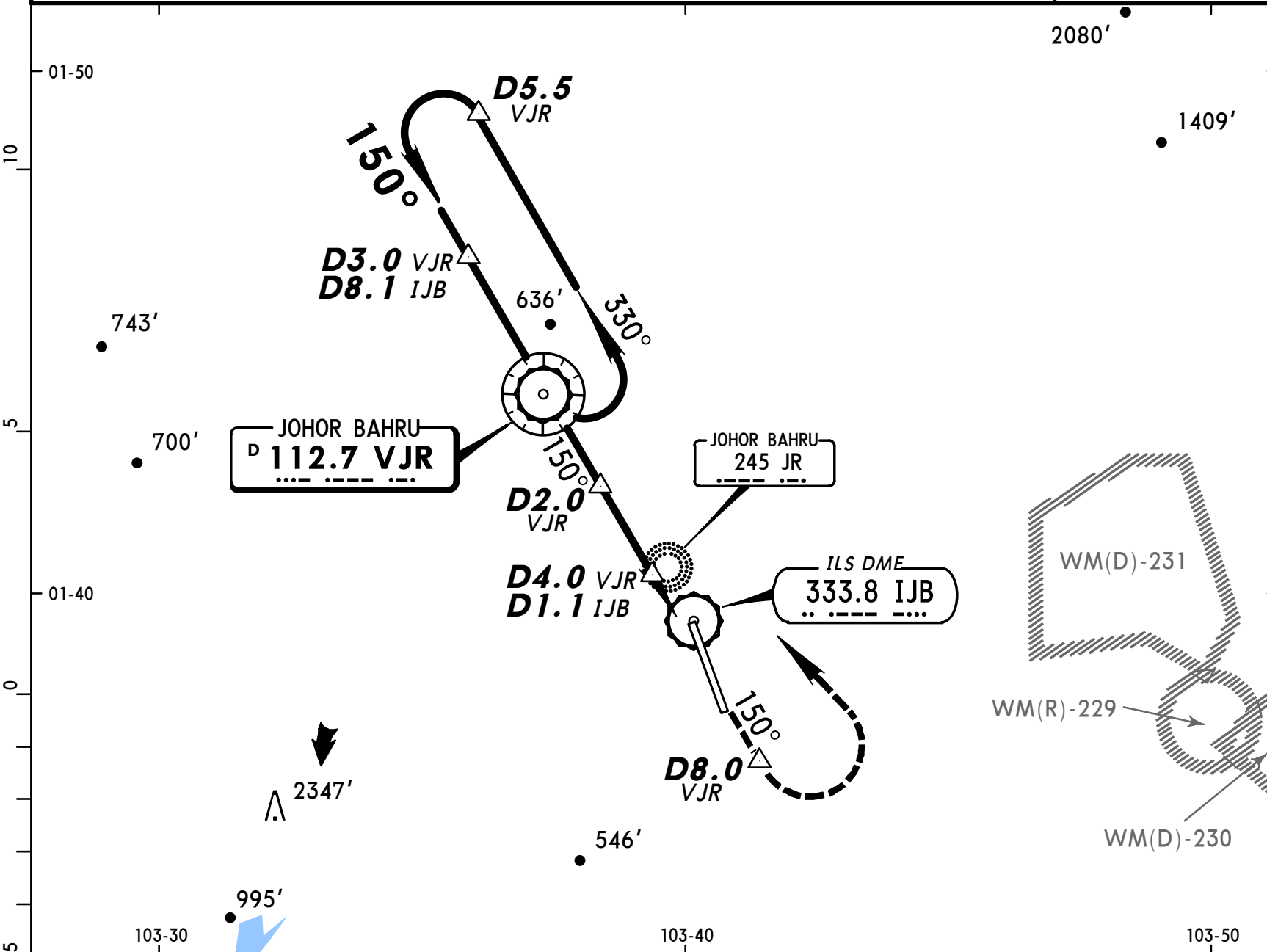


**WMKJ**  
**SULTAN ISMAIL**

5 JAN 01 **(13-1)**

**JEPPESEN** **JOHOR BAHRU, MALAYSIA**  
**VOR DME Rwy 16**

*ATIS <b>126.6</b>		*JOHOR Approach <b>124.7</b>		*JOHOR Tower <b>122.5</b>		*Ground <b>121.8</b>		
VOR VJR <b>112.7</b>	Final Apch Crs <b>150°</b>	Minimum Alt <b>D3.0 VJR</b> <b>2500' (2365')</b>	MDA(H) <b>640' (505')</b>	Apt Elev <b>135'</b> RWY 16 <b>135'</b>		<p>MSA VJR VOR</p>		
<b>MISSED APCH: Climb on 150° to 1000' by D8.0, turn LEFT and return to VJR VOR at 2500', or as directed by ATC.</b>								
Alt Set : hPa    Rwy Elev: 5 hPa    Trans level: FL 130    Trans alt: 11000' (10865') 1. Procedure based on 185 kts IAS.								



Gnd speed-Kts	70	90	100	120	140	160	PAPI ALS 1000' on 150° by D8.0 LT
Descent Gradient 5.0%	354	456	506	608	709	810	
MAP at D4.0 VJR/D1.1 IJB							

STRAIGHT-IN LANDING RWY16			CIRCLE-TO-LAND		
MDA(H) <b>640' (505')</b>					
		ALS out	Max Kts	MDA(H)	
A	1200m	1600m	100	670'(535')-1900m	
B			135	670'(535')-2800m	
C	1600m	2400m	180	1050'(915')-3700m	
D			205	1050'(915')-4600m	